



YARD HYDRANTS



CUSTOMER OBJECTIONS



“I would rather save a couple bucks”

Backhoes are expensive. If you cheap out on the yard hydrant, you will likely spend more on maintenance or replacement.

“I don’t plan on using it that often.”

Even a little wear on a cheaper hydrant can cause leaks and defeat the entire purpose of a frost free yard hydrant.

“Water’s been tested. Don’t need a more corrosion resistant yard hydrant.”

There are tons more variables than just the water flowing through the yard hydrant that affect its lifespan (ex. ground water, acidic soil, etc.)



UPSELL OPPORTUNITIES

From Standard to Premium

Differences between the two are material, engineering & standpipe bury depth measurement

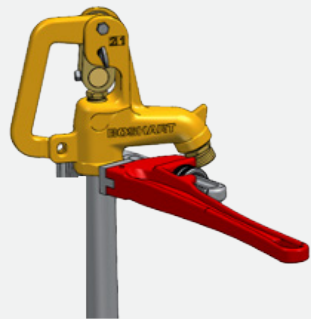
Material Upgrade

Galvanized to stainless steel stand pipe, leaded to no lead, no lead to stainless steel

Yard Hydrant Accessories

- Vacuum breaker
- Bronze & SS hydrant elbows and tees
- Stainless steel hose clamps

YARD HYDRANT IMPROVEMENTS



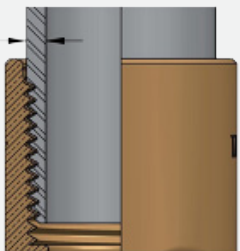
Head Casting Elongated

Longer HEX allows for more room and an easier grip of the head casting when servicing the yard hydrant.



Two Flow Channels

Dual flow passages allow for more flow capacity, eliminating the need for a 1" inlet. 3/4" inlet provides more than enough flow and outperforms the other yard hydrants that were evaluated.



No Exposed Standpipe Threads

Precision machining on the valve body and extending the head casting allows the full thread length of the stand pipe to be engaged, eliminating rust and corrosion issues on exposed and/or buried threadings.



7/8" Plunger

7/8" diameter plunger provides more clearance, allowing for easier removal during maintenance.

WHAT ARE YARD HYDRANTS?



Yard Hydrants are a Non-Freeze Valve that helps provide water all year round.

Lifting the handle raises the connecting rod and plunger off of the valve seat. The raised plunger allows water to flow through the valve body and up the stand pipe.

Water is drained from the pipe below the frost line so there is no water that will freeze when the temperature drops in the winter.

SIZING & INSTALLATION



Determining Length Required

1. What is the frost line depth ("bury") in your location?
2. Add an additional two foot clearance between the ground level and the spout.

ie. Our 4' bury hydrants (YHBR-04 & YHSS-04) have a 6' stand pipe.